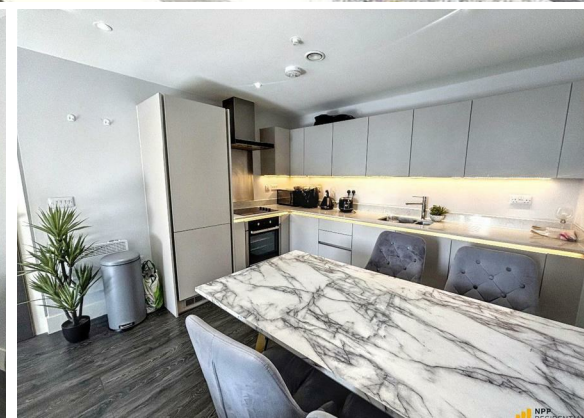
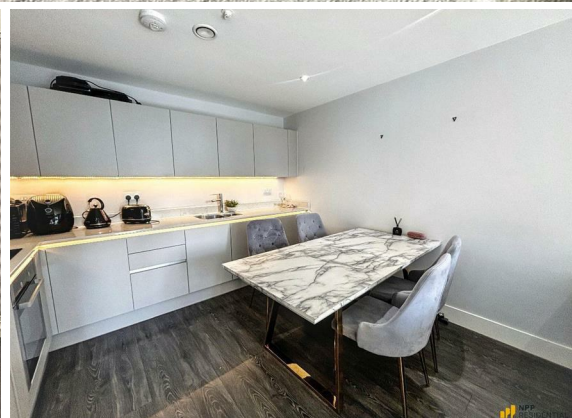




2 Bed  
Apartment  
located in 6  
Cheetham Hill Road

£1,450 PCM



 **NPP**  
RESIDENTIAL

**EPC Rating:**  
**Council Tax Band: D**

Energy Efficiency Rating		
	Current	Potential
<i>Very energy efficient - lower running costs</i>		
(92 plus) <b>A</b>		
(81-91) <b>B</b>		
(69-80) <b>C</b>		
(55-68) <b>D</b>		
(39-54) <b>E</b>		
(21-38) <b>F</b>		
(1-20) <b>G</b>		
<i>Not energy efficient - higher running costs</i>		
EU Directive 2002/91/EC 		
<b>England &amp; Wales</b>		

## DIRECTIONS

### CONTACT

22 Lloyd Street  
Manchester  
M2 5WA

E: [info@nppresidential.co.uk](mailto:info@nppresidential.co.uk)  
T: 0161 639 0059  
<https://nppresidential.co.uk/>

